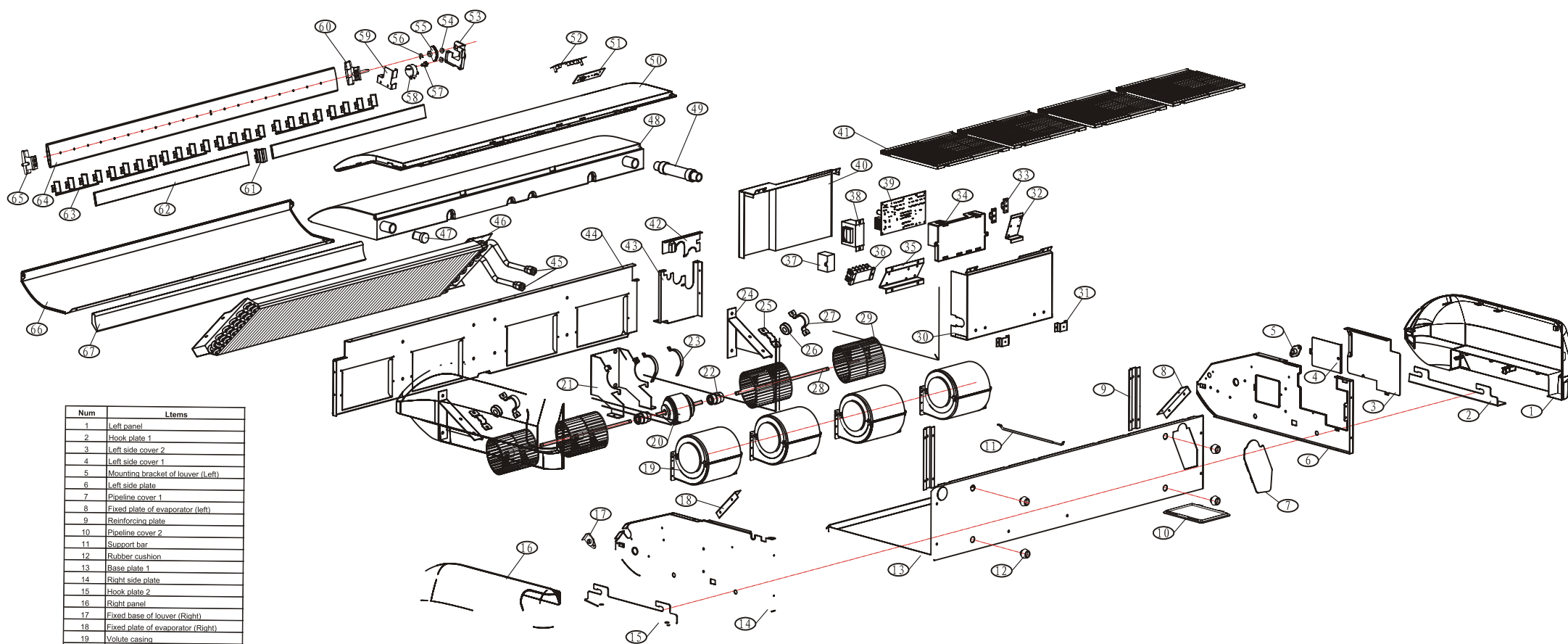


VISTA EXPLODIDA



Num	Items
1	Left panel
2	Hook plate 1
3	Left side cover 2
4	Left side cover 1
5	Mounting bracket of louver (Left)
6	Left side plate
7	Pipeline cover 1
8	Fixed plate of evaporator (left)
9	Reinforcing plate
10	Pipeline cover 2
11	Support bar
12	Rubber cushion
13	Base plate 1
14	Right side plate
15	Hook plate 2
16	Right panel
17	Fixed base of louver (Right)
18	Fixed plate of evaporator (Right)
19	Volume casing
20	Indoor motor
21	Indoor motor support
22	Connector
23	Indoor motor clamp
24	Bearing support
25	Bearing base
26	Bearing
27	Bearing clamp
28	Motor axis
29	Indoor fan
30	Electric control box
31	Fixed base of electric control box
32	Wire-pressed plate
33	Wire-pressed clamp
34	Base of Electric control box
35	Installing plate of terminal block
36	Terminal block
37	Molded case capacitor
38	Transformer
39	PCB
40	Cover of electric control box
41	Air inlet grid subassembly
42	Valve plate 1
43	Valve plate 2
44	Clapboard
45	In(Out)water pipe
46	Evaporator
47	Plug of water outlet
48	Drain pan
49	Connector of drain pipe
50	Indoor panel
51	Indicator lamp board
52	Cover of indicator lamp
53	Cover of stepping motor
54	Bearing cover
55	Gear 1
56	Clamp spring
57	Gear 1
58	Stepping motor
59	Fixed support of stepping motor
60	Left setoff
61	Middle setoff
62	Vertical-swinging Louver 1
63	Horizontal-swinging Louver
64	Vertical-swinging Louver 2
65	Right setoff
66	Base plate 2
67	Air outlet rubber